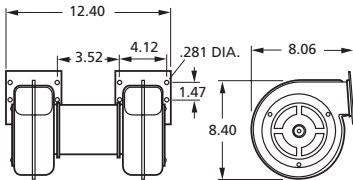


Centrifugal Blowers

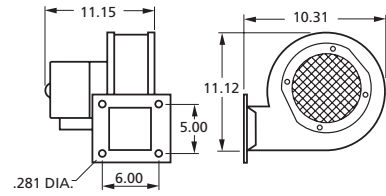
MARS SERIES **079**



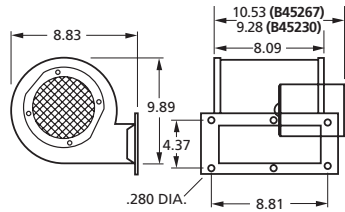
**50756-D500,
50756-D230**



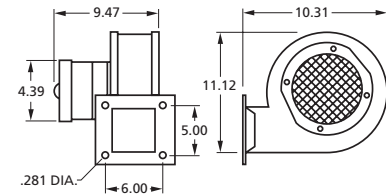
A455



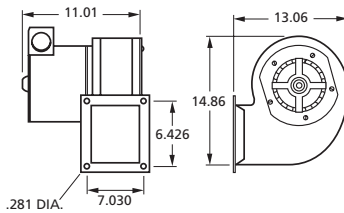
B45267, B45230



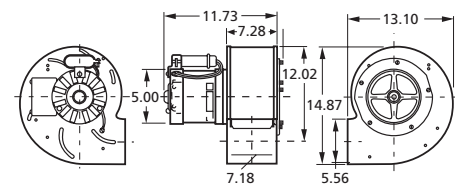
**50769-D500,
50769-D230**



B68042



A1000



FASCO

MODEL#	CFM AT STATIC PRESSURE SHOWN										NAME-PLATE CFM	VOLTS	FREQ.	NO. OF SPEEDS	RPM@ FREE AIR	AMPS@ FREE AIR
	STATIC PRESSURE (INCHES OF WATER)															
	0.1	0.2	0.3	0.4	0.5	0.6	0.7	0.8	0.9	1						
50756-D500	245	225	200	160	—	—	—	—	—	—	320	115	60	1	1500	1.3
50756-D230	245	225	200	160	—	—	—	—	—	—	320	230	50/60	1	1500	.65
A455	440/318	417/307	390/290	375/275	350/250	319/228	275/170	231/108	150/75	68/40	455	115	60	2	1500/1100	1.5
B45267	393/356	359/331	318/297	254/240	187/167	64/58	—	—	—	—	460	115	60	2	1600/1400	2.9
B45230	393/356	359/331	318/297	254/240	187/167	64/58	—	—	—	—	460	208-230	50/60	2	1600/1400	1.2
50769-D500	391/331	370/315	349/280	318/273	292/241	250/203	204/138	91/70	47/40	—	480	115	60	2	1200/1400	3.55
50769-D230	391/331	370/315	349/280	318/273	292/241	250/203	204/138	91/70	47/40	—	480	208-230	50/60	2	1200/1400	1.9
B68042	694	674	652	585	557	483	127	51	—	—	815	115	60	1	1100	5.6
A1000	950/-	920/-	880/-	850/799	800/750	730/700	660/640	580/500	300/260	120/120	1000	115/230	60	2	1100/1100	4-2.9/2-1.4